



## DIN Rail WLED Digital LED Controller User Instruction

GL-DR-009WL、GL-DR-010WL

### Parameters

Model: GL-DR-009WL、GL-DR-010WL

Input voltage: DC 5-12-24V

Input current: 10A Max

communication method: WiFi

Material: Fireproof PC

Temperature: -20~45°C

Wire terminal diameter range: 0.5-2.5mm<sup>2</sup>

Strip length: 9-10mm

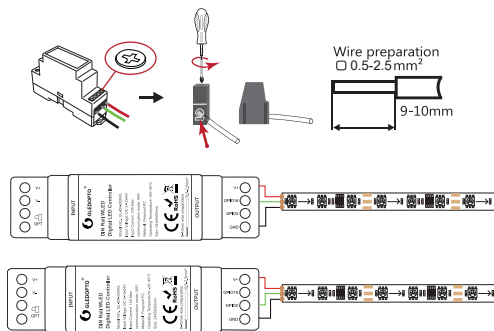
Supported chips: WS2811, WS2812, WS2812B,

FL1903B, SK6812, SM16703P, SM16703SP3, etc.

Frequency band: 2402-2480 MHz

Transmission power: max. 16 dBm

### Wiring Diagram



### APP Download Method



1. IOS : "App Store" Search and download WLED or WLED Native within the app.



2. Android: Download from the website <https://github.com/Aircooke/WLED-App/releases>.

### APP Configuration Steps

1. Power on the DIN Rail WLED Digital LED Controller.
2. Open the phone settings, go to Wi-Fi settings, find and connect to the Wi-Fi named "WLED-AP" with the password "wled1234" (see Figure 1).



Figure 1



Figure 2

3. After successful connection, it will automatically jump to the WLED page (see Figure 2) (or enter the website 4.3.2.1 in the browser to enter the WLED page).

4. Click on "WIFI SETTINGS" in Figure 2 to enter and set the Wi-Fi account and password (see Figure 3), then click "Save & Connect" at the top of the screen to save (see Figure 4).



Figure 3



Figure 4



Figure 5

5. Make sure your phone and the DIN Rail WLED Digital LED Controller are connected to the same Wi-Fi network. Open the WLED app (see Figure 5), click on the "+" icon in the upper right corner of the screen (see Figure 6), then click on "DISCOVER LIGHTS..." (see Figure 7). When it displays "Found WLED!" below the button, it means the DIN Rail WLED Digital LED Controller has been found (see Figure 8). Click the checkmark icon in the upper right corner to go back to the main page, and the discovered WLED controller will be displayed in the list (see Figure 9).



Figure 6



Figure 7



Figure 8



Figure 9

Note: When the DIN Rail WLED Digital LED Controller is disconnected from the router, the chip will restart and return to the default state (you can find the hotspot "WLED-AP" in the phone's Wi-Fi settings).

### Microphone configuration (If this feature is available)

1. Go to the WLED control page, click on "Config" in the top right corner, select "Usermods", find "Digitalmic" after entering, configure according to the configuration information, click "Save" after configuration is complete, and then power off the controller.
2. Go to the WLED control page, click on "Info" at the top, click on the button next to "AudioReactive" to use the Mic.

Configuration Information:

1. Microphone type: Generic 12S
2. 12S SDpin: 26 4.
3. 12S WS pin: 5
- 12S SCK pin: 21



Note: After configuring the microphone parameters, you need to power off and on the controller once to use the microphone function.

### LED Strip Configuration

1. The DIN Rail WLED Digital LED Controller can have two output channels. The output terminal connections are "V+ GPIO16/GPIO2 GND," which should be connected to the "VCC DATAGND" of the digital LED strip. GPIO16 is the default output and should be prioritized. The other group, GPIO2, can be used after configuring it in the app. Only one GPIO output is needed for each LED strip.

2. On the WLEDcontrol page, click on the "Config" option in the upper right corner, then select "LEDPreferences" to enter. Find "Hardware setup" to configure the LEDstrip information.



Description of Button Functions

OPT button:

- 1. Short press: Power on/off.
- 2. Longpress for 1second: Switchcolors.
- 3.Longpress for 10seconds: Reset the WLED controller on the guide rail and activate the hotspot "WLED-AP".



Reset Methods

1. Button reset:
- Longpress the OPT button for 10 seconds, then release it.
2. APP reset:
- (1). Enter the WLEDcontrol page and click on the "Config" option in the upper right corner.

(2). Click on "Security &Updates" at the bottom, then scroll down to find "Factory reset" and check the box. Finally, click on "Save".



**LED-Trading** Tobias Ebert  
Schoeneicher Str. 42, Schoeneiche b. Berlin, Germany, 15566  
0049 30 641 689 17 info@led-trading.de

Troubleshooting and Solution

Number	Symptoms	Solution
1	Indicator light is not on	Check whether the input power connection is correct
2	APP shows "offline"	1. Check if the phone is on the same network as the controller. 2. Check if the controller is out of the range of the WIFI connection, causing unstable connection. 3. Turn off and on the controller to retry.
3	APP is connected, but the light strip is not controllable	1. Check if the power supply is working properly. 2. Check if the power supply voltage matches the light strip. 3. Check if the input power connection is correct. 4. Check if the light strip connection is correct. 5. Check if the GPIO settings in the APP are correct. 6. Check if the light strip IC model in the APP is set correctly.
4	The brightness of the light strip is low, and the front and back colors are significantly different	1. Check if the power supply is working properly. 2. Check if the power supply matches the light strip. 3. Check if all connections are good, and use conductive and short wires as much as possible for connection. 4. Add power supply at an appropriate position. 5. Check if the APP has set a limit on brightness or current.



- 1.Before turningon the power, please ensure that all connections are correct and secure, and do not operate while the power is on.
- 2.The product should be used under the rated voltage. Usingit under excessive or insufficient voltage may cause damage. Do
- 3.not disassemble the product, as it may cause fire and electric shock.
- 4.Do not use the product in environments exposed to direct sunlight, moisture, high temperatures, etc.
- 5.Do not use the product in metal shielded areas or around strongmagnetic fields, as this may severely affect the wireless signal transmission of the product.

Disclaimers

- 1.Our company will update the content of this manual based on the improvement of product functionality. The updates will be displayed in the latest version of this manual, without further notice.
- 2.Due to our continuous adoption of newtechnologies, product specifications may change without further notice.
- 3.This manual is provided for reference and guidance only and does not guarantee complete consistency with the actual product. The actual application should be based on the actual product.
- 4.The components and accessories described in this manual do not represent the standard configuration of the product. The specific configuration is subject to the packaging.

- 5.All text, tables, and images in this manual are protected by relevant national laws and may not be used without our permission.
- 6.This product may be compatible with third-party products (such as apps, HUE, etc.), but our company does not take responsibility for compatibility issues or partial loss of functionality caused by changes in third-party products.

Disposal

The device must not be disposed of with household waste. Please either return it to us or dispose of it at a recycling center.

Disclaimer

The installation of all components may only be carried out by a qualified electrician in compliance with all applicable standards and regulations.

All steps in this manual and those of other components used must be followed. Please read the manual carefully before commissioning and installation. LED-Trading is not liable for accidents or damage caused by improper use or by connecting individual components. Unauthorized distribution and reproduction are prohibited.

EU Declaration of Conformity

We, LED-Trading Tobias Ebert, hereby declare that the controller complies with Directives 2014/53/EU (RED), 2014/30/EU (EMC), 2014/35/EU (LVD), and 2011/65/EU (RoHS). The full text of the EU declaration of conformity can be provided upon request.

UST-IdNr.: DE281526153  
WEEE- Reg.-Nr.: DE58003750

